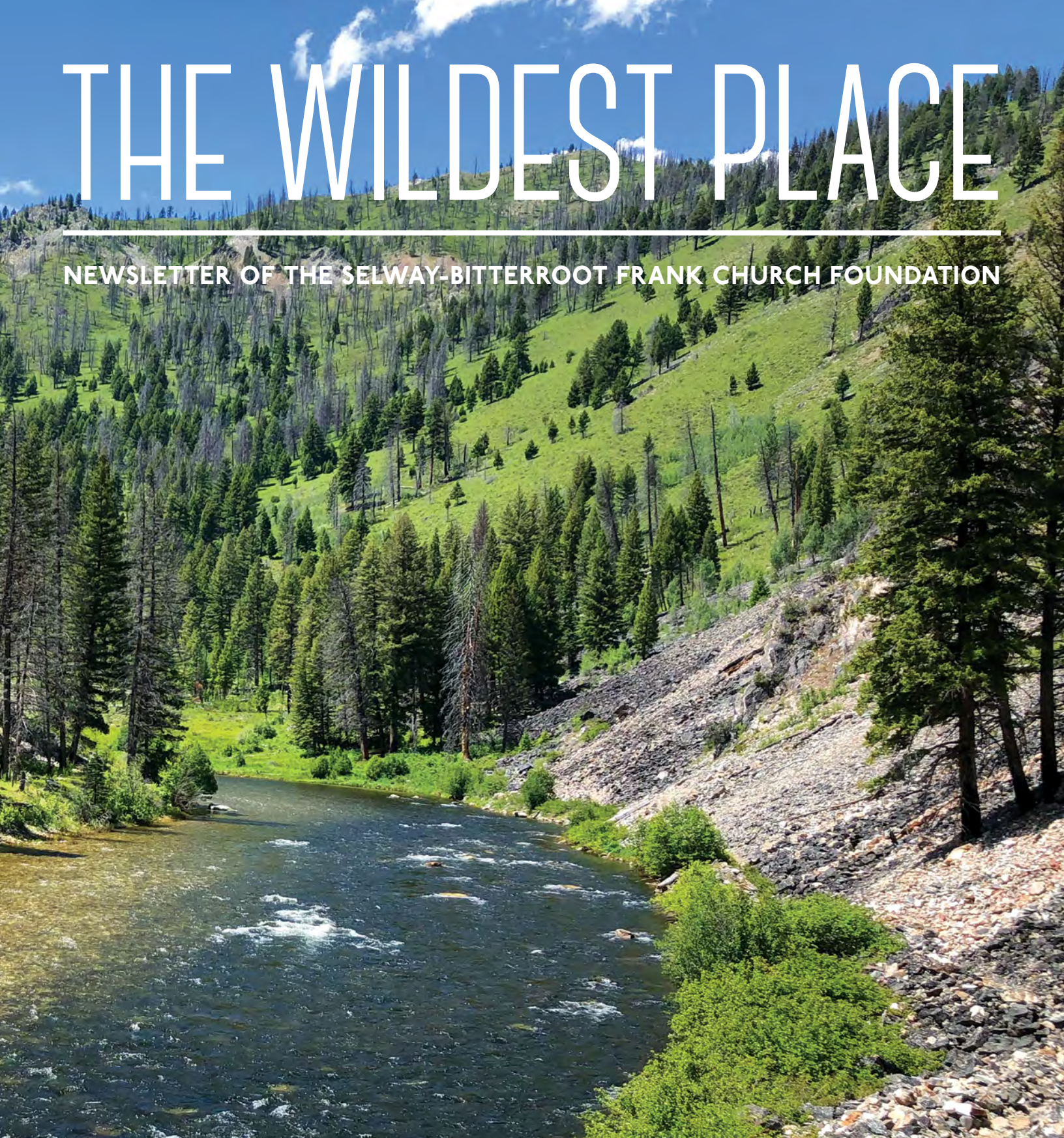


THE WILDEST PLACE

NEWSLETTER OF THE SELWAY-BITTERROOT FRANK CHURCH FOUNDATION



SELWAY BITTERROOT
FRANK CHURCH
FOUNDATION

SUMMER 2019

SUMMER 2019

STAFF

SALLY FERGUSON
Executive Director

COURTNEY WALL
Program Director

SUE WEBSTER
Communications/
Membership

KRISSY FERRITER
Volunteer Coordinator

CONNOR ADAMS
Powell Lead Wilderness
Steward

JOEY HUDEK
Moose Creek Lead
Wilderness Steward

JOSH PAGE
Frank Church Lead
Wilderness Steward

TREVOR FERRO
Nez Perce-Clearwater
Trail Crew Leader

WILLIAM THELEN
Nez Perce-Clearwater
Trail Crew Member

SAM FREESTONE
Moose Creek Trail Crew
Member

ABBY PROPSOM
Moose Creek Trail Crew
Member

JUSTINE BRIGHT
Nez Perce-Clearwater
Trail Crew Member

JAMES MYERS
Nez Perce-Clearwater
Trail Crew Member

BOISE OFFICE
322 E. Front St., Ste. 420F
P. O. Box 1886
Boise, ID 83701
208.373.4381

BOARD OF DIRECTORS

ED KRUMPE
Chair - Moscow, ID

NANCY FELDMAN
Vice Chair - Boise, ID

JONI STRIGHT
Secretary - Moscow, ID

JERRY RANDOLPH
McCall, ID

PHIL JAHN
Grangeville, ID

BUTCH HARPER
Ketchum, ID

TOM KOVALICKY
Grangeville, ID

CHARLES MILLER
Hamilton, MT

LARRY SWAN
McCall, ID

MARK WETHERINGTON
Hamilton, ID

JIM HEIDELBERGER
Moscow, ID

JOHN LLOYD
Ketchum, ID

**CONNIE SAYLOR
JOHNSON**
2006 - 2018

**WESTERN MONTANA
OFFICE**
120 Hickory Ave, Ste. A
Missoula, MT 59801
406.880.1927



SELWAY BITTERROOT
FRANK CHURCH
FOUNDATION

The Wildest Place is the membership newsletter of the Selway-Bitterroot Frank Church Foundation. With the support of members, local businesses, and generous grantors, the SBFC is committed to connecting citizens and communities to assist in the stewardship of the Selway-Bitterroot Wilderness, Frank Church-River of No Return Wilderness, and surrounding wildlands.

EDITING: Sue Webster

DESIGN & LAYOUT: Kelsey Selis

CONTRIBUTORS: Sally Ferguson & Courtney Wall

COVER PHOTO: Middlefork of the Salmon River - FCRONR Wilderness

PHOTOGRAPHER: Khalil Taylor

The Selway-Bitterroot Frank Church Foundation is a 501(c)(3) non-profit organization.

SELWAYBITTERROOT.ORG

[facebook.com/selwaybitterroot](https://www.facebook.com/selwaybitterroot) [selwaybitterroot](https://www.instagram.com/selwaybitterroot)

FROM THE BOARD CHAIRMAN

A Tribute to Wilderness Education

How do you create a lasting tribute to someone who dedicated her life to things you believe deeply in?

Connie Saylor Johnson was such a person and that was the question the SBFC Board of Directors asked when we realized she was gone from us. Connie started her career as an educator in Iowa and never really strayed far from that calling when she moved west. She worked in the Selway-Bitterroot Wilderness, as a wilderness ranger and packer for the Forest Service. Connie also worked with many dedicated volunteers to establish the Selway Bitterroot Frank Church Foundation, the nation's largest Wilderness stewardship partnership organization with the US Forest Service.

Although Connie was a master at packing and wilderness work, she never missed an opportunity to teach people about the meaning and value of Wilderness. Almost two decades of SBFC Wilderness Ranger Interns, Iowa high school students, trail crew leaders, Moose Creek volunteers and educators from across the country have benefited from her advice, encouragement and wisdom.

This is why the SBFC board, working closely with Connie's family, has created an endowment that will provide grants for Wilderness education and stewardship for youth and volunteers in perpetuity. Please join the SBFC board in honoring Connie's legacy by giving to the Connie Saylor Johnson Wilderness Education Fund.

Electronic Donations: www.selwaybitterroot.org/donate

Check Donations: SBFC Attn:CSJWEF PO Box 1886 Boise, ID 83701

Ed Krumpe
Board Chairman



FROM THE EXECUTIVE DIRECTOR

I sure hope you've been enjoying summer!

SBFC staff, Wilderness Interns and volunteers certainly have! So far this season, dozens of cheerful SBFC youth and adult volunteers accomplished 7 stewardship projects in the Frank and Selway, with the help of skilled volunteer stock packers. Hardworking SBFC staff and nine spunky Wilderness Ranger Interns have already completed four hitches of wilderness work. They opened trails and conducted wilderness monitoring for solitude, invasive weeds and campsite conditions.

On the Middle Fork Trail project in June, a Salmon-Challis National Forest wilderness ranger joined our group. It was great to see him using the new FCRONR wilderness monitoring protocols and new data collection booklet! You can read more about this project in the blog section of our webpage and in this edition of the newsletter—page 7. SBFC partnered with the Salmon-Challis National Forest to develop and implement the new monitoring protocols. This is another example of how our Forest Service partnership supports consistent management across the wilderness areas.

I have been on three SBFC volunteer projects in the Frank and Selway. It is always a pleasure—and a lot of fun—to get to work with our rock-star volunteers! Many are returning volunteers, who tell me they are committed to giving back through wilderness stewardship. This is wilderness advocacy at its inspiring best!

I'm looking forward to the Upper Marble Creek project in August. Thanks to our Payette National Forest partners, SBFC has officially been designated as the steward of the Marble Creek Trail. A sign with the SBFC logo will be installed in August at the Thunder Mountain Trailhead. We'll post photos on our Instagram and Facebook pages later this summer!

Sally Ferguson
Executive Director



STEVE MANTANI - WILDERNESS RANGER INTERN - 2017

WHERE ARE THEY NOW?

This is the seventh installment of interviews collected from our past interns. Established in 2009, the SBFC Wilderness Ranger Internship Program is our signature program. SBFC provides a high level of training and guidance for university-level students who have coursework in wilderness, environmental studies, or recreation management.

College Credentials

Master of Forestry, Michigan Tech, November 2017 - B.A. Economics, Rutgers University, August 2009

What has been your career path thus far?

After completing my master's degree, I was hired by the USFS on the Eastern Region Timber Strike Team. As a member of the strike team I worked on national forests from Minnesota to West Virginia and Maine to Missouri. A few months later I accepted an offer to be a Silvicultural Forester on the Coronado National Forest in Tucson, AZ. As a Silvicultural Forester I primarily plan and implement forest restoration projects.

What was the most poignant experience you had as an intern?

The juxtaposition of brutally demanding physical work and the absolute splendor of relaxing in the wilderness with little distractions. One particular day, we spent it digging out and rebuilding a small section of trail that had been completely covered in rock debris from upslope erosion. Imagine a combination of moving large heavy boulders and shoveling scree over and over again for hours. After several hours we started to hit more solid earth and constructed a crib wall to mitigate further erosion. It is the most physical work I have ever done. In contrast, during our lunch break we sat in the shade, dipped our feet into Big Creek and listened to the water rage past us as we had absolutely nothing to do but enjoy our lunch and relax. No phone calls, no emails, no noise, just us and the splendor of the Frank Church.

How did the SBFC internship play a role in landing your first job out of college?

While most of the skills I learned as an intern for SBFC are not directly related to my current position, I think showing potential employers that you have the mental and physical fortitude to spend long periods of time in the wilderness doing challenging work speaks a lot about character and ability to work in a team.

How did the internship help you in your college work and/or your new career?

The internship gave me perspective on the history of federally designated wilderness and hammered home some of the important dates and laws I had previously learned. This understanding certainly helps me to be a more well-rounded and knowledgeable natural resources professional, especially for USFS.



Where do you see yourself in 5 years?

I love my current position with the US Forest Service and am really enjoying living in the Sonoran Desert. I expect to have this position for the next 2-4 years and then have the opportunity to apply for a promotion to be the Forest Silviculturist.

Anything else you'd like to share with our readers?

I just want to give a big thanks to all the folks who make SBFC a great organization including the employees, board members, donors, volunteers, other interns, and partners. It was a great summer and an excellent learning experience that I wouldn't have had without you. The work you are doing is critically important to preserving our public lands! Keep on getting after it!



BUY A PLATE. SUPPORT WILDERNESS STEWARDSHIP IN IDAHO!

PLATE FUNDS SUPPORT SBFC AND THE WILDERNESS WORK WE DO

2019 WILDERNESS RANGER INTERNS

Once again SBFC received over 60 applications for our Wilderness Ranger Intern positions. There were so many great candidates, the individuals who were chosen stood above the others. Our faith in the future is always boosted when we see such strong advocates and leaders poised to launch into their careers in the next couple of years. The 2019 WRIs began training in May and will graduate and return to school mid-August. You can read their enlightening and entertaining blogs by going to www.selwaybitterroot.org/blog.



BRIANA BIENUSA



**Salmon-Challis National Forest
Montana State University
Organismal Biology & Ecology**

Briana grew up in the Bitterroot Valley riding horses and hiking in the surrounding mountains. Studying Organismal Biology has better helped her understand the foundational science that pieces together our world. Her degree as well as the time she spends outside has helped her form a passion for the conservation of our wild spaces.



CONNOR WHITE



**Bitterroot National Forest
Appalachian State University
Recreation Management**

Connor's hometown is La Grange, North Carolina, a small town in the Eastern part of the state. Starting with Boy Scouts, he has been in the outdoors for most of his life and loves climbing, hiking, and trail running. He is passionate about wilderness because it's where he goes recharge from day to day life. Connor wants to help keep wilderness areas alive for the next generations.

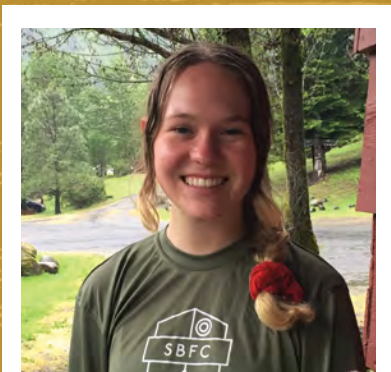


EMMA FROELICH



**Nez Perce-Clearwater National Forest
University of Wisconsin—Madison
Forest Science**

Emma grew up in the Baraboo Bluffs of South-Central Wisconsin, 10 minutes North of Devil's Lake State Park and 15 minutes South of Aldo Leopold's Shack, both of which were fieldtrip hotspots. Many of her childhood summers were spent at a Girl Scout Camp in Northern Wisconsin, hiking, kayaking, climbing trees and learning to love the outdoors.

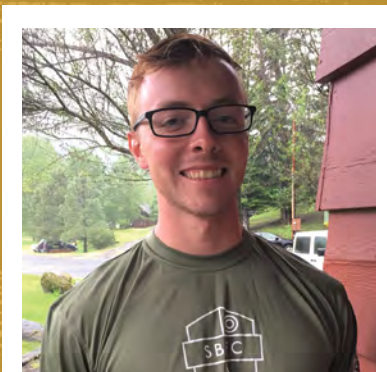


LAUREN SIMMS



**Nez Perce-Clearwater National Forest
Lewis & Clark College—Oregon
Environmental Studies**

Lauren is from outside Philadelphia, Pennsylvania. She has worked in Yosemite National Park, Valley Forge National Historical Park, and Cape May State Park. She serves as an outdoor leader for Lewis & Clark College Outdoors.



MICHAEL RIVIERE



**Bitterroot National Forest
University of Montana
Parks, Tourism, Recreation Management**

Michael's hometown is New Orleans, Louisiana. He has experience working on trails in the Grand Tetons and New River Gorge River National Park, in West Virginia and De Soto National Forest, in Mississippi. He is excited to learn about traditional wilderness stewardship and tool use.



VERENA GRUBER



**Bitterroot National Forest
KarlFranzens University—Graz, Austria
Mountain Geography**

Verena grew up in a small village in the Biosphere Reserve Salzburger Lungau, in the heart of the Austrian Alps. Her passion for mountains led to a university degree in mountain geography. Verena now works for the European Wilderness Society from the main office in Tamsweg in the UNESCO Biosphere Reserve Lungau. Her goal this season is to broaden her knowledge of Wilderness stewardship and take this learning back to European Wilderness areas to share US wilderness practices.



HANNA KIRKLAND



Salmon-Challis National Forest
Utah State University
Wildlife Science

Hanna's hometown is Fresno, California. She enjoys hiking, exploring new places, and learning about nature. Last year, she spent five months backpacking in Australia and completed a study abroad course on Heron Island. She has a passion for ecology, and loves to learn how ecosystems work and relate to one another. The past two years Hanna worked as a field technician for the Brown Marmorated Stinkbug project.



HENRY VAUGHN



Nez Perce-Clearwater National Forest
College of Idaho/University of Idaho
Environmental Studies

Henry is from Moscow, Idaho. He spends time on a small organic farm outside of Moscow. Henry also hikes, camps, fishes, boats, and rafts in Idaho. While attending the College of Idaho and working in the Sawtooth National Recreation Area in central Idaho, he started to discover the wilder parts of the state and its Wilderness areas. **Henry was chosen as the 2019 Warren Miller WRI Scholar.**



KRISTOPHER MUELLER



Nez Perce-Clearwater National Forest
Iowa State University
Forestry & Environmental Studies

Kristopher is from Dubuque, Iowa, where he spent time fishing and sometimes camping on the Mississippi River. He has worked with the Southwest Conservation Corps as a trail crew member, and a local county conservation board on trails. He enjoys wilderness and the outdoors because it gives him a chance to disconnect from the digital world and appreciate natural beauty for what it is.

WARREN MILLER

WILDERNESS RANGER INTERNSHIP SCHOLARSHIP

The Warren Miller Wilderness Ranger Intern Scholarship was established in honor of Warren Miller, 1945-2014. Warren worked as a Wilderness Ranger in the Selway-Bitterroot Wilderness, on the historic Moose Creek District, from 1971-1991. He was a traditional tools expert who taught himself the intricate art of filing crosscut saws. Warren parlayed his experience and knowledge into teaching courses in "Crosscut Maintenance and Sharpening" for 20 years. He has trained hundreds of wilderness devotees to use and care for crosscut saws. He has inspired even more to respect, appreciate, and steward Wilderness for today and, more importantly, for future generations.

Warren is remembered for his integrity, curiosity, and enduring dedication to Wilderness. His passion for the Selway-Bitterroot and his commitment to the SBFC Foundation endures through this scholarship.

Each year one of the SBFC Foundation Wilderness Ranger Interns is chosen to receive this Scholarship award based on their curiosity and passion for the area, vision for the future, and their leadership qualities.

Donations to this fund directly support the Warren Miller/
Wilderness Ranger Internship Scholarship.

WELCOME KRISSEY FERRITER

SBFC VOLUNTEER COORDINATOR

Krissy joined the SBFC team in April and hit the ground running by organizing early season volunteer projects and taking care of the backlog of logistical details required for each hitch. As an avid hiker, skier and supporter of public lands, Krissy is thrilled to coordinate and expand the SBFC volunteer program capacity. She brings over a decade of experience working for wilderness stewardship and education organizations in Vermont, British Columbia, Florida, Alaska, Nevada, and Montana. Krissy earned a B.S. in Environmental Studies from the University of Vermont and a M.S. in Forest Resources from the University of Washington. We are grateful for Krissy's ingenuity and vision as we move to a new level of volunteer stewardship.



NRWSI

WELL PREPARED FOR WILDERNESS

Each spring the SBFC staff and SBFC Wilderness Ranger Interns spend several weeks in training courses designed to prepare them for a summer-long Wilderness stewardship experience. In addition to SBFC specific classes and Wilderness First Responder training, the staff and interns participate in a week-long session conducted by The Northern Rockies Wilderness Skills Institute. This is a new training partnership that includes the Selway Bitterroot Frank Church Foundation, Society for Wilderness Stewardship, and the United States Forest Service.

The NRWSI successfully launched their first week-long training session in 2018. Courtney Wall, SBFC Program Manager, worked closely with Jack Ader, Colter Pence, and Jimmy Gaudry (all USFS employees) to develop and implement both the beginner and advanced Wilderness Stewardship tracks. Content in the beginner course included: Wilderness Act history, planning process before hitch, setting up camp

and orienteering, skills needed while on hitch, wilderness values, and wilderness campsite monitoring.

Wilderness work requires a special scope of skills. This program is designed to provide volunteers, agency, and partnership staff opportunities for growth within these unique skill sets. These courses provide skills training for all levels of experience, from those new to stewardship to those who have been stewarding wilderness for decades.

Wilderness is a vast space, its character complicated. The NRWSI training, combined with SBFC training, prepares our interns and crew with the education and experience they need for a successful, safe, and memorable summer.



MOUNTAIN FILM FESTIVAL - ON TOUR

A collection of culturally rich, adventure packed, and incredibly inspiring documentary films.

Friday, October 11, 2019

Egyptian Theatre

Downtown Boise

Doors/Raffle 6:00 pm – Show 7:00 pm

Adults - \$15 Eventbrite.com/\$20 at door

Students \$10 – At door w/ID

Beverages: Payette Brewing

Raffle prizes include YETI 45L Cooler!

TOM LANG WINS EXCELLENCE IN WILDERNESS STEWARDSHIP RESEARCH AWARD



Portions reprinted from: W.A. Franke College of Forestry and Conservation, University of Montana

Congratulations to University of Montana alum and SBFC 2018 Frank Church Wilderness Monitoring Coordinator. He recently won the Excellence in Wilderness Stewardship Research Award, part of the US Forest Service's 2018 National Wilderness Awards, for his master's thesis work.

Tom graduated in May 2018 with an MS in Recreation Management. His master's thesis, *Wilderness Solitude in the 21st Century*, investigated the relationship between contemporary digital technology and the experience of wilderness solitude.

Tom said, "When I came to UM and started reading the research on wilderness solitude I felt as though certain elements of the experience were not being properly represented, so I devoted my efforts to filling these voids and bringing the research topic up to date."

Last summer Tom worked as the SBFC Wilderness Monitoring Coordinator and led a project to develop monitoring protocols to consistently track the social and biophysical impacts of recreational use across the 2.4 million acres of the Frank Church River of No Return Wilderness. This season Tom's work is being put to practice by FCRONR wilderness rangers using the new monitoring protocol and data collection booklet.

Go to the blog post: <http://www.selwaybitterroot.org/blog-for-editing/2019/2/the-frank-a-rich-history-of-place> to read about Tom's research.



AFTER YOU'VE STORED AWAY YOUR POLES, PACK AND TENT IT'S TIME FOR SOME HOLIDAY SHOPPING!

We'll be doing our 2nd Annual \$1,000 REI gift card raffle in November and December!

Some lucky person will win a \$1,000 Gift Card to REI. It's a perfect stocking stuffer or set aside a couple for yourself.

Watch your email for details... If you're not getting our emails go to: <http://www.selwaybitterroot.org/contact> and sign up!





Selway-Bitterroot Foundation INC
 PO Box 1886
 Boise, ID 83701

**2018-2019
 Annual Sponsors**



PROTECT AND PRESERVE THE LEGACY OF WILDERNESS

YOUR DONATION SUPPORTS:

Wilderness stewardship for the Selway-Bitterroot and Frank Church River of No Return Wilderness areas and the SBFC Wilderness Ranger Intern Program.

PLEASE INDICATE YOUR MEMBERSHIP LEVEL

\$30 \$60 \$120 \$240 \$600 \$_____

Send gift with this form to:
 SBFC Foundation – PO BOX 1886 Boise, ID 83701

Monthly and one-time payment options are available on our secure website: selwaybitterroot.org/donate



SELWAY BITTERROOT
 FRANK CHURCH
 FOUNDATION

Name: _____

Please charge my credit card one-time.

Address: _____

Card Number _____

City: _____ State: _____

Expiration Date ____ / ____ Three digit code _____

Zip: _____

Email: _____

Signature _____

Gift Amount: _____

THANK YOU FOR YOUR GIFT

REMEMBER THE SELWAY BITTERROOT FRANK CHURCH FOUNDATION IN YOUR ESTATE PLANS

We hope you will consider the Selway Bitterroot Frank Church Foundation in your estate planning. Memorial gifts and bequests are placed in a special fund so that these gifts can permanently support wilderness protection in the Selway-Bitterroot and Frank Church River of No Return Wilderness areas.

We welcome your inquiries about bequests and other kinds of giving. Please call or email Sally Ferguson, 208-871-1906, sferguson@selwaybitterroot.org.

If you wish to make a provision in your will, we suggest the following general language:

"I give, devise and bequeath to the Selway Bitterroot Frank Church Foundation, a Montana non-profit corporation (Federal tax ID# 27-2868220) located at 322 E. Front Street, RMRS Ste. 401, PO Box 1886, Boise Idaho, 83701, the sum of \$_____ or _____% of the rest, residue, and remainder of my estate [or \$_____ if specific amount]."